

Rotating Wheels for Rodent Activity

Cat. No. 1800 / 1850

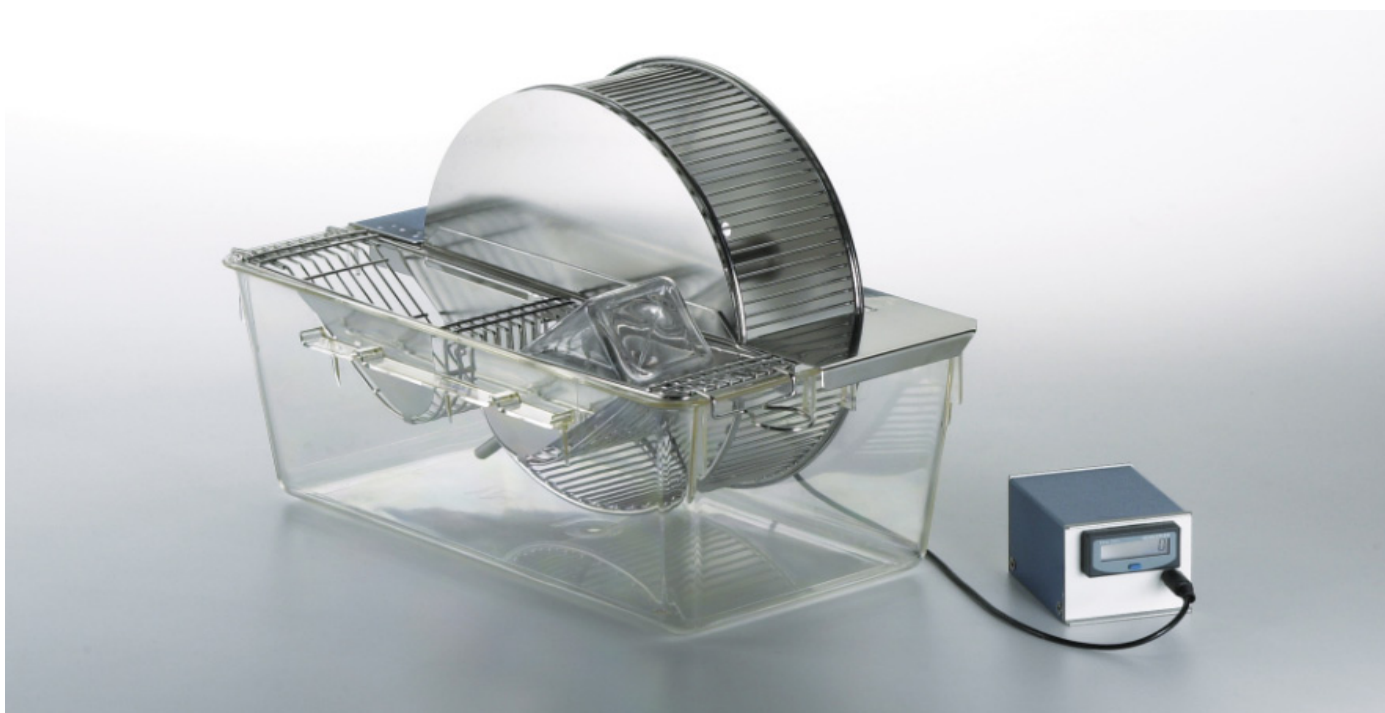
**EASY MONITORING OF
RODENT MOTOR
ACTIVITY**

Data Acquisition
available as optional
(2600 Multifunction Printer)

General

The Activity Wheels are designed to provide an easy and convenient method for measuring motor activity over long periods of time in laboratory rodents.

Especially useful for research on circadian rhythms or motor function, when connected to the 2600 Multifunction Printer or to any other data acquisition systems.



Main Features

- Flexibility: version for rats or mice
- Easy monitoring (compatible with any Data Acquisition System)
- All stainless-steel wheel construction
- Clear polycarbonate cage for total visibility

1850 Mouse Cage

The 11850 is the classic **25 cm diameter running-wheel** made of stainless steel, provided with low friction Teflon bushing, for quite smooth action. The mouse runs on 2mm bars, placed 7 mm apart.

The wheel is housed in a clear polycarbonate cage. A stainless steel wire lid with exclusive lid locks incorporates a U-shaped food hopper for pellets; water bottle is not included.

The **Mouse cage is dimensioned 37(h)x26(w)x358d) cm.**



1800 Rat Cage

The Rat Cage is similar to the mouse model; the **running wheel has 35 cm diameter**. The 2 mm bars are placed 8.8 mm apart.

Dimensions of the **Rat Cage are 48(h)x32(w)x47(d) cm.**

Revolution Counter

Each cage is complete with magnetic switch and LCD counter. The switch counts whole revolutions of the activity wheel and operates on an extended-life battery (included).

Cages without counter, models 1800-S and 1850-S, are also available, for data collection via PC, see paragraph below.

Data Acquisition

For data acquisition a Multifunction Printer is required.

This is a microprocessor controlled device, designed to acquire data from 6 Cat. **2600**) independent channels (each Activity Wheel requires 1 channel).

The data, stored in the 2600 internal memory and shown on its graphic display, can be printed out in real time and/or routed to the PC, via the CUB software provided as standard.

When working with the Multifunction Printer, the counter is not required, so you may consider models **1800-S** or **1850-S**.



The picture above features a Multifunction Printer, with the necessary multi-connection cable 2610-F to connect up to 6 activity wheels.

Ordering Information

- 1800 Rat Activity Wheel**, complete with polycarbonate cage, magnetic switch and LCD revolution counter
- 1850 Mouse Activity Wheel**, complete with polycarbonate cage, magnetic switch and LCD revolution counter
- 1800-S Rat Activity Wheel**, complete with polycarbonate cage & magnetic switch, without counter
- 1850-S Mouse Activity Wheel**, complete with polycarbonate cage & magnetic switch, without counter

Multifunction Printers

- 2600 Multifunction Printer, 6 input channels**, with microprocessor for direct connection to the PC. Complete with dedicated software 52050-01, serial cable & USB adaptor

2610-F Multi-Connection Cable

Physical

Dimensions	1800	48(h)x32(w)x47(d) cm
	1850	37(h)x26(w)x358d) cm
Weight	1800	7Kg
	1850	5Kg
Shipping weight	1800	11Kg
	1850	7Kg