

Beehive Conditioning Cage Manager

A SINGLE UNIT TO CONTROL:

- experimental settings (light, sound, etc.)
- shock parameters
- acquisition, management and export of experimental data



Great
Versatility

Outstanding
Adaptability

Main Features

- The electronic with touch-screen encompasses all controls for **up to 4 animal cages**
- The same controller will function as main unit in a number of **conditioning tests**; just purchase the hardware and the application software for the additional test!
- The new "**launcher**" application, makes it easy to manage other UB behavioral cages

System Description

The new **Beehive system**, is an advanced, versatile, modular system for conditioning tests.

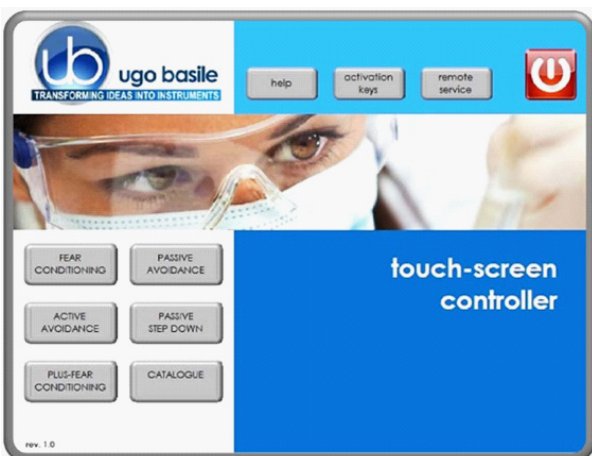
Different set-ups, depending on animal (rat or mouse), type of behavioral test and number of cages, can be obtained by combining the following elements:

- **Touch-Screen Controller with Shocker**
- **Behavioral Cage/s** (up to 4 with one controller)
- **Expansion Box**, for multiple cage set-up
- **Isolation Cubicle/s Box**, (if required)



The “queen bee” is the **40500-001 Touch-Screen Controller**, a powerful tool incorporating a 12” touch-screen, which will function as main unit in a number of tests, via the dedicated application software:

- **Fear Conditioning**
- **Passive Avoidance (step-through)**
- **Passive Avoidance (step Down)**
- **Active Avoidance**
- **Learned Helplessness**
- **Startle Response/PPI for Mice**



The **40500-001**, encompasses all controls, incorporates a constant-current high precision 8-pole shocker, and manages data acquisition: data are stored inside the unit and can be downloaded via the USB key provided as standard, for further processing via Excel, Access, etc.

Up to 4 cages of the same type can be connected to the same Controller, via expansion box/es **40500-005**.

For each test, a specific application software is available for installation; each software is sold separately, so it is easy to customize each controller.

Launcher Menu

By the application “Launcher UB” installed on the 12” touch-screen, the user chooses the experimental routine among the ones installed.

In addition, the Launcher features the following options:



- **Help:** pressing the “help” button will display the Launcher user manual online
- **Activation Keys:** software activation keys are entered via a virtual keyboard. Additional software activations may be purchased separately
- **Remote Service:** remote service is manager by a specific software installed on the Touch-Screen.

Ordering Information

40500-001 Touch-Screen Controller & Shocker

Available Software Activation Keys

- 40530-010** Activation SW for **Active Avoidance**
- 40550-010** Activation SW for **Passive Avoidance**
- 40570-010** Activation SW for **Passive Avoidance (step-down)**
- 46000-110** Activation SW for **Fear Conditioning NG**
- 47500-010** Activation SW for **Helplessness**
- 48000-010** Activation SW for **Startle/PPI**

See also the following datasheets

- 40530** **Passive Avoidance (step-through)**
- 40550** **Passive Avoidance (step-through)**
- 40570** **Passive Avoidance (step-down)**
- 46000** **Fear Conditioning**
- 47500** **Learned Helplessness**
- 48000** **Startle/PPI for Mice**

System Specifications

Inputs	4
Input voltage	TTL input 0-5Vdc opto-isolated
LCD	12” with resistive touch screen
CPU Module Port	2 USB Port 2.0
	1 Ethernet port 10/100Mb
	1 DVI port for external monitor
Peripheral Port	4 outputs for Sound, Shock and Light
Power supply	12V-2A
Expansion Bus	
Connection	2 RJ11 connectors
USB port	type B (only for software connection)
Weight	2.7Kg
Shipping Weight	4Kg
Dimensions	25(d) x 33(w) x 5.5(h) cm
Packing	53x41x13cm